

LA BUVETTE®

The specialist in watering



F25

Non-spill and anti-nibbling rotomoulded HDPE bowl

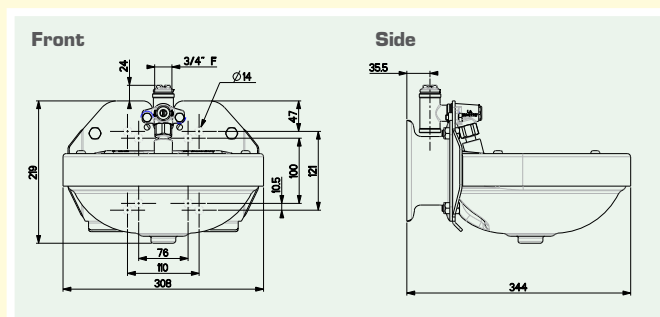
Hot-dipped galvanised all-around protection edge: stronger and avoids nibbling.

Ø30 mm drain plug.



Brass or stainless steel valve.

Dimensions



Ref. 3063 F25 brass valve / EAN 13 3599150048149

Ref. 3064 F25 Stainless steel valve / EAN 13 3599150048187



A sturdy drinker

- The rotomoulded HDPE bowl is shock-resistant.
- The hot-dipped galvanised steel all-around protection edge avoids nibbling.
- The non-spill edge and easily operated tube valve guarantee drinking comfort without spilling water.
- The dimensions of F25 offer your cattle easy access to the water.
- The rounded shapes prevent injuries to the animals.

Ease of installation

- Easy mounting on a wall or a round post with A331 bracket.
- The 3/4" brass or stainless steel T-valve allows multidirectional water connection.
- A367 set for easy connection to a SPEED-FLOW circulation pump (to keep the system frost-free).

Ease of use and maintenance

- The set screw allows to adjust the flow up to 18 l/min (at 3 bars) without having to disassemble the drinker.
- Quick cleaning without the use of tools through Ø 30 mm drain plug.

Accessories

Ref. A331 Mounting bracket for waterers on pole Ø102 mm (4") or «trèfle»

Ref. A367 Connection set for water circuit



► Circulation set to keep valve and water lines frost-free.



Visit our website: www.labuvette.com

Rue Maurice Périn • P. A. Ardennes Émeraude • CS 50749 Tournes • F-08013 CHARLEVILLE-MÉZIÈRES Cedex

Tel.: +33 324 52 37 23 • Fax: +33 (0)3 24 52 37 24 • Email: commercial@labuvette.com